

Attachment

1. Overview of Choshi Offshore Wind Power Facility

Power facility location	Offshore facility (off coast of Choshi, Chiba Prefecture): 35°40'54" North latitude 140°49'13" East longitude Inland substation facility : 15-9 Shiomicho, Choshi, Chiba Prefecture
Single unit max. output	2,400kW
Number of units	1
Maximum output	2,400kW
Wind turbine	MWT92/2.4 offshore specifications
Height to turbine center	80m
Rotor diameter	92m
Distance from ocean surface to rotor blade tip	126m
Blade length	34m
Generator	Induction type
Wind speed at which power generation begins	3.5m/s
Wind speed at which power generation is suspended	25.0m/s
Rated output wind speed	12.5m/s

2. History of Choshi Offshore Wind Power Facility

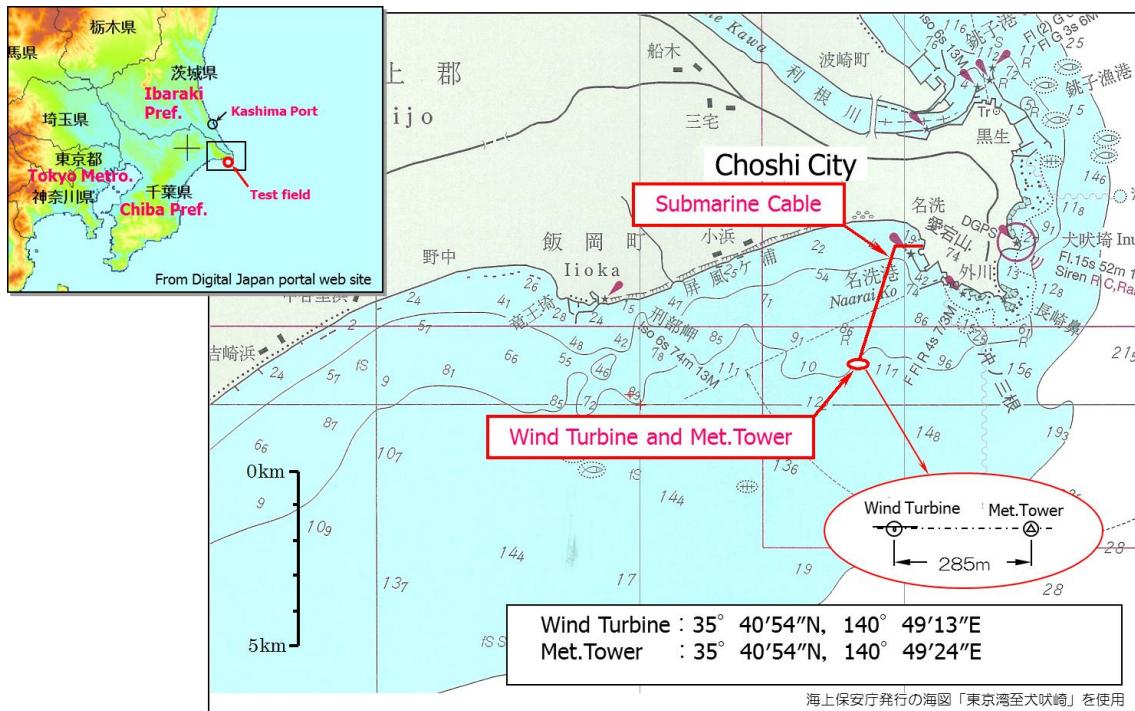
August 2009: TEPCO responds to public appeal by New Energy and Industrial Technology Development Organization (NEDO) and launches research into wind and marine conditions and the environment impact of offshore structures.

January 2013: TEPCO begins Japan's first testing offshore wind power facility, built in cooperation with NEDO, approximately 3.1 km south of Choshi. The test provides experience with and continuous data on operating and maintaining a facility under harsh weather and marine conditions, including to ensure equipment safety and resistance to damage from saltwater. The aim is to establish the technology required for the introduction and expansion of offshore wind power facilities.

January 2017: Anticipating the conclusion of the demonstration test with NEDO, TEPCO begins deliberating commercialization of the wind power facility and discussing operation protocols with related parties.

March 2017: TEPCO concludes demonstration tests performed with NEDO.

3. Map of Choshi Offshore Wind Power Facility



Offshore wind power generation test facility (right) and wind-measuring tower (left)